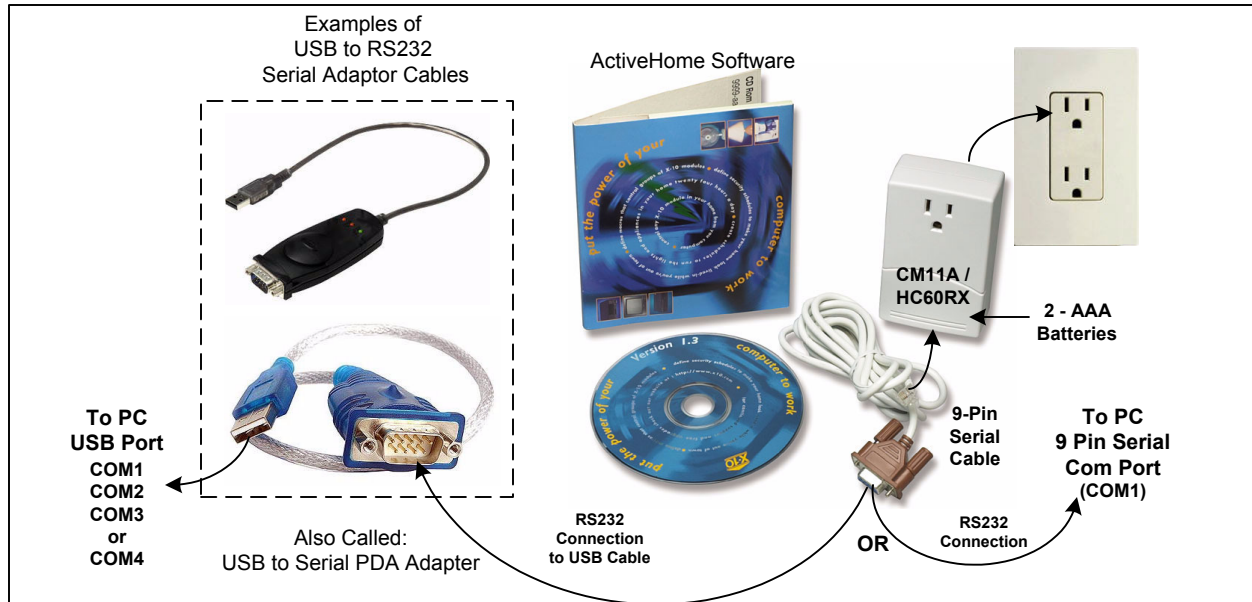


Computer Interface - Controller

**HC60RX
(CM11A)**



Description: The CM11A / HC60RX is a Computer Interface Module serving as an X10 Controller. The CM11A works with ActiveHome Software to control any X10 Receiver Module in the home. The CM11A plugs into an outlet and connects to a PC's RS232 Serial Port or it can use an aftermarket USB to Serial Adaptor Cable to allow the CM11A to be USB compatible. The ActiveHome Software allows the user to setup On/Off times for multiple X10 Receiver Modules on a particular time schedule. ActiveHome also provides MACRO generation which allows Scene Control development or special control of specific events, to be executed. Once ActiveHome Software is configured, the setup is downloaded to the CM11A Module. At this point, the CM11A can be detached from the PC and will run automatically on its own. X10 Receiver Modules can be controlled, manually, from the software window of ActiveHome as long as the CM11A is connected to the PC.

Specific Requirements: 120VAC, 2 - AAA Batteries
CM11A (X10 PRO Model No.), HC60RX (RCA Model No. - Exact same Module)
Version 1.42 Active Home Software, Download at www.x10pro.com, Tech Support
Windows 3.x, 95, 98, ME, NT4, 2000, XP, Vista Compatible, For MAC use: go to www.shed.com to download MAC compatible software

Optional / Supplementary Devices & Modules:

USB to Serial PDA Adapter / USB to RS-232 Serial DB9 Adapter (either product name will suffice) sold at all office/computer stores.
XPCR - Phase Coupler Repeater, to ensure full-strength X10 Signals on both 120V phases in a home.
XPPF, XPF - Noise Filters to reduce interfering noise from electrical devices on power lines.

X10 Protocol:

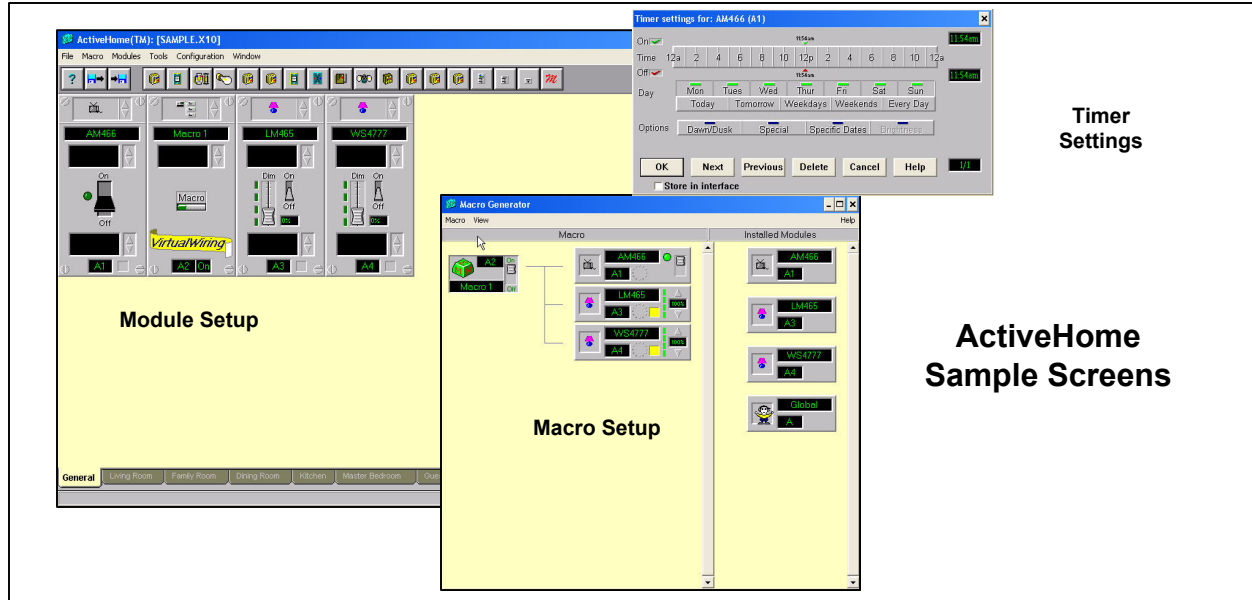
House Code Dial - Letters A-P, Default "A" **Unit Number Dial** - Numbers 1-16, Default "1"
Each X10 Receiver Module is set to a unique Unit Number or to an identical Unit Number as desired.
Each X10 Controller operating a specific set of Receiver Modules must be set to the same House Code as the Receivers they are controlling.

Electrical Protocol:

Nearly all residential homes are wired SPLIT-PHASE. Each 120V Phase is NOT directly connected with the other 120V phase. If after installation, an X10 Receiver does not respond to a remote Controller, then check to ensure that the breaker serving the X10 Receiver is on the same phase as the Controller. If not, the breaker can be changed to the opposite phase. An alternative solution is recommended, to install a Phase Coupler for improving remote communications throughout the home. See www.x10pro.com, click on Tech Support and select PLC Troubleshooting.

Installation: Connect to PC directly at RS232 9-Pin Serial Port:

1. The 9-Pin Serial Com Port on all PC's is assigned to COM1.
2. Ensure the CM11A is attached to the PC 9-Pin Serial Com Port. Install two AAA batteries into the CM11A. Plug the CM11A into a wall outlet.
3. Install ActiveHome software by double-clicking on file name, ahsetup.exe, downloaded from www.x10pro.com - Click on Tech Support, left toolbar.
4. When installation asks if you want to change the Communications Port, click on "YES". Then select COM1.
5. Accept all defaults, the installation completes, then reboot.
6. Setup the CM11A - Launch ActiveHome software, make following selections:
 - a. Menu Bar, Tools, Test Communications, Interface Test, Click on TEST. Should pass on 1st attempt.
 - b. Menu Bar, Configuration, Set Interface Clock, wait for System Time and Interface Time to become equal.
 - c. Same Window, Click on DST, Geographic Location:
 - I. Check Box "USA and Canada" if applicable to your location.
 - II. Select a City and State and Country that is in your time zone.
 - III. Select "Time Zone" location.
 - IV. Check "Daylight Savings Time" if applicable.
 - d. Menu Bar, Configuration, Battery Life, Select Battery type, Click "Change" when installing new battery.
7. You are now ready to use ActiveHome to control your home, refering to the ActiveHome Menu Bar "HELP" - Contents Menu, which is the owners manual for operation in each window.



Installation: Connect to PC via the USB to Serial Adaptor Cable:

1. Purchase a USB to 9-Pin Serial Adaptor cable, this will allow the CM11A to become USB compatible. The cable is available at any computer/office store. Ensure that a software installation CD comes with it.
2. Install the software for the USB to Serial adaptor cable. Do not connect the USB Adaptor cable until the software directs you to do so.
3. Once the USB cable is fully installed, go to **Control Panel**, then: System / Hardware / Device Manager. Look under: Ports (COM & LPT).
 - a. There you will see the USB Cable device installed: i.e. - { USB-to-Serial Comm. Port (COM1) } Double Click on that item.
 - b. Select Port Settings Tab / Advanced. Lower Left Box, note which Com Port Number: is assigned. It must be on COM1, 2, 3 or 4.
 - c. If not, change it to one of those COM Ports 1-4, until one that is not being used, is accepted.
4. Once COM1, 2, 3 or 4 is selected, that is the Com Port that will be assigned in ActiveHome.
5. Ensure the CM11A is attached to the USB Adaptor Cable. Install two AAA batteries into the CM11A. Plug the CM11A into a wall outlet.
6. Install ActiveHome software by double-clicking on file name, ahsetup.exe, downloaded from www.x10pro.com / Tech Support.
7. When installation asks if you want to change the Communications Port, click on "YES". Then select COM1, 2, 3 or 4, same as Adaptor Cable.
8. Accept all defaults, the installation completes, then reboot.
9. Setup the CM11A - Launch ActiveHome software, make following selections:
 - a. Menu Bar, Tools, Test Communications, Interface Test, Click on TEST. Should pass on 1st attempt.
 - b. Menu Bar, Configuration, Set Interface Clock, wait for System Time and Interface Time to become equal.
 - c. Same Window, Click on DST, Geographic Location:
 - I. Check Box "USA and Canada" if applicable to your location.
 - II. Select a City and State and Country that is in your time zone.
 - III. Select "Time Zone" location.
 - IV. Check "Daylight Savings Time" if applicable.
 - d. Menu Bar, Configuration, Battery Life, Select Battery type, Click "Change" when installing new battery.
10. You are now ready to use ActiveHome to control your home, referring to the ActiveHome Menu Bar "HELP" - Contents Menu, which is the owners manual for operation in each window.